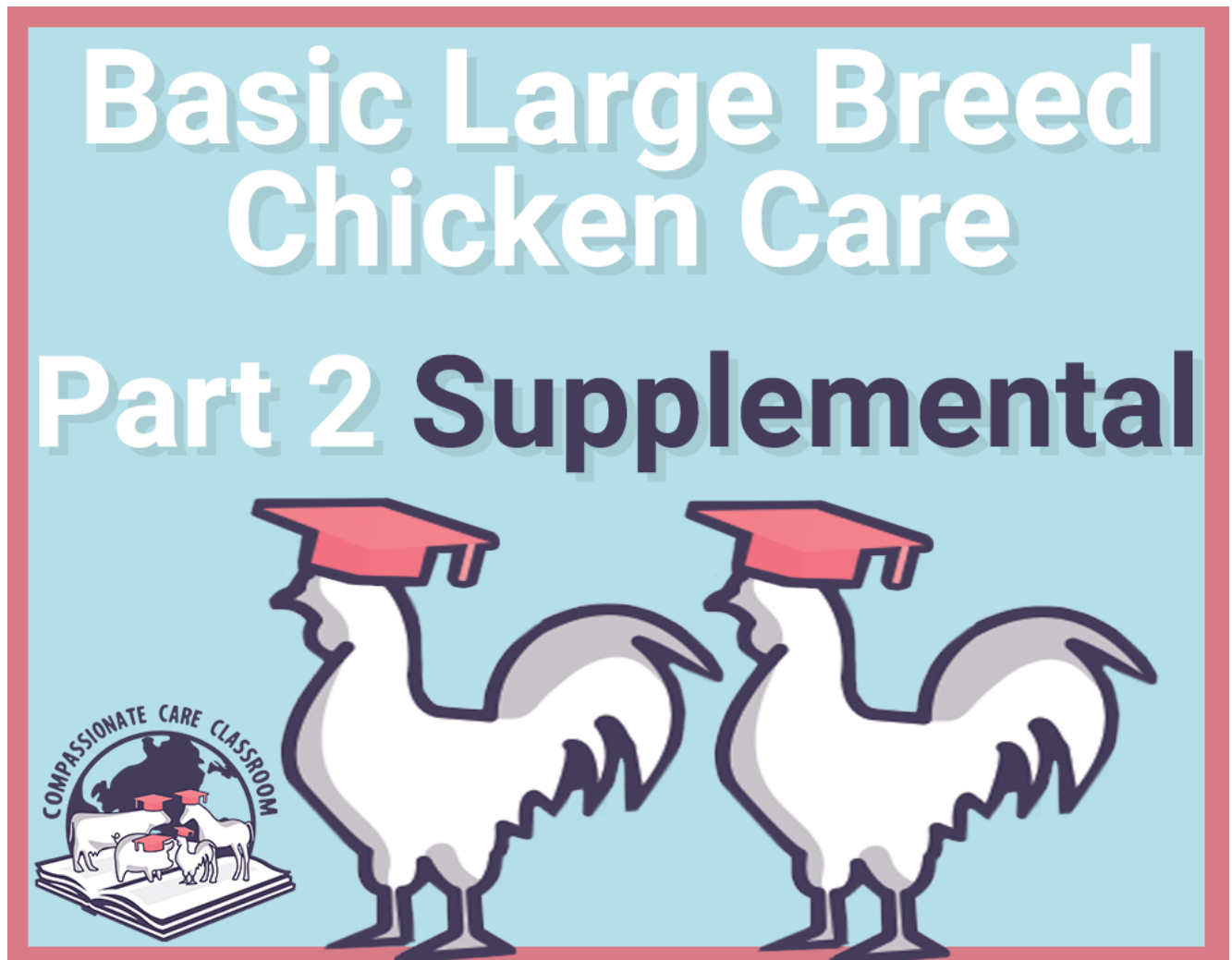


Basic Large Breed Chicken Care Part 2 of 2 (Supplemental Version)



About This Course

For learners who have completed [Basic Chicken Care Part 2 of 2](#) **AND** either [Basic Large Breed Chicken Care Part 1](#) **OR** [Basic Large Breed Chicken Care Part 1 Supplemental](#), this course covers the additional care considerations for large breed chickens, such as the Cornish cross.

[Click here](#) if you **haven't** taken Basic Chicken Care Part 2 of 2 and just want to take the main Basic Large Breed Chicken Care Part 2 of 2 course!

Prerequisites For This Course

In order to be eligible to take this course, you must complete:



[Basic Chicken Care Part 2 of 2](#)

And, complete **EITHER** of the following:



[Basic Large Breed Chicken Care Part 1](#)

OR

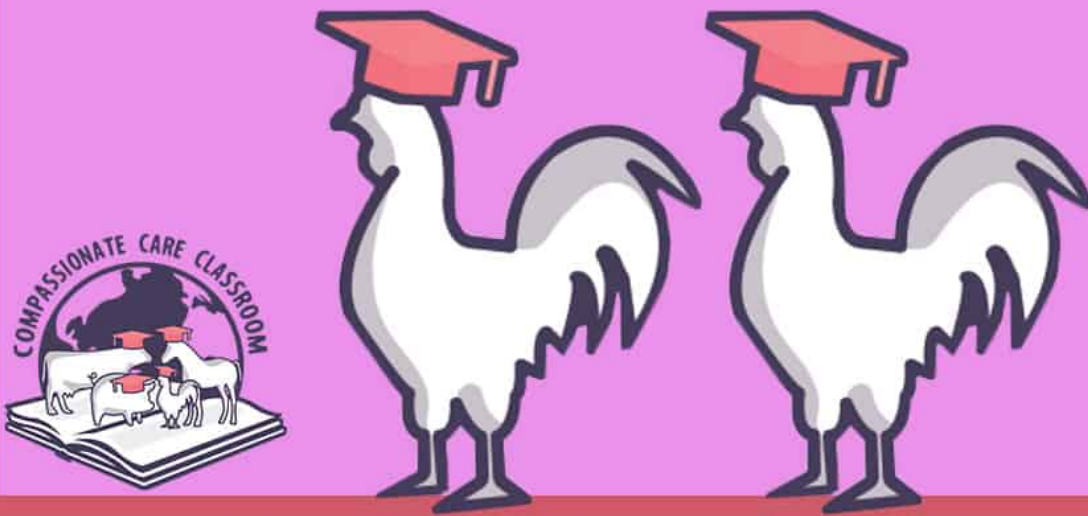


[Basic Large Breed Chicken Care Part 1 Supplemental](#)

[Back To Course List](#)

Basic Chicken Care Part 2 of 2

Basic Chicken Care Part 2 of 2



About This Course

This course covers additional aspects of basic chicken care that were not yet covered in [Part 1](#), with a focus on health care practices and protocols. Completion of this course will culminate with a personalized certificate of completion!

Prerequisites For This Course

In order to be eligible to take this course, you must complete **EITHER** of the following course progressions:



[Basic Chicken Care Part 1 of 2](#)

Or, complete BOTH of the following:



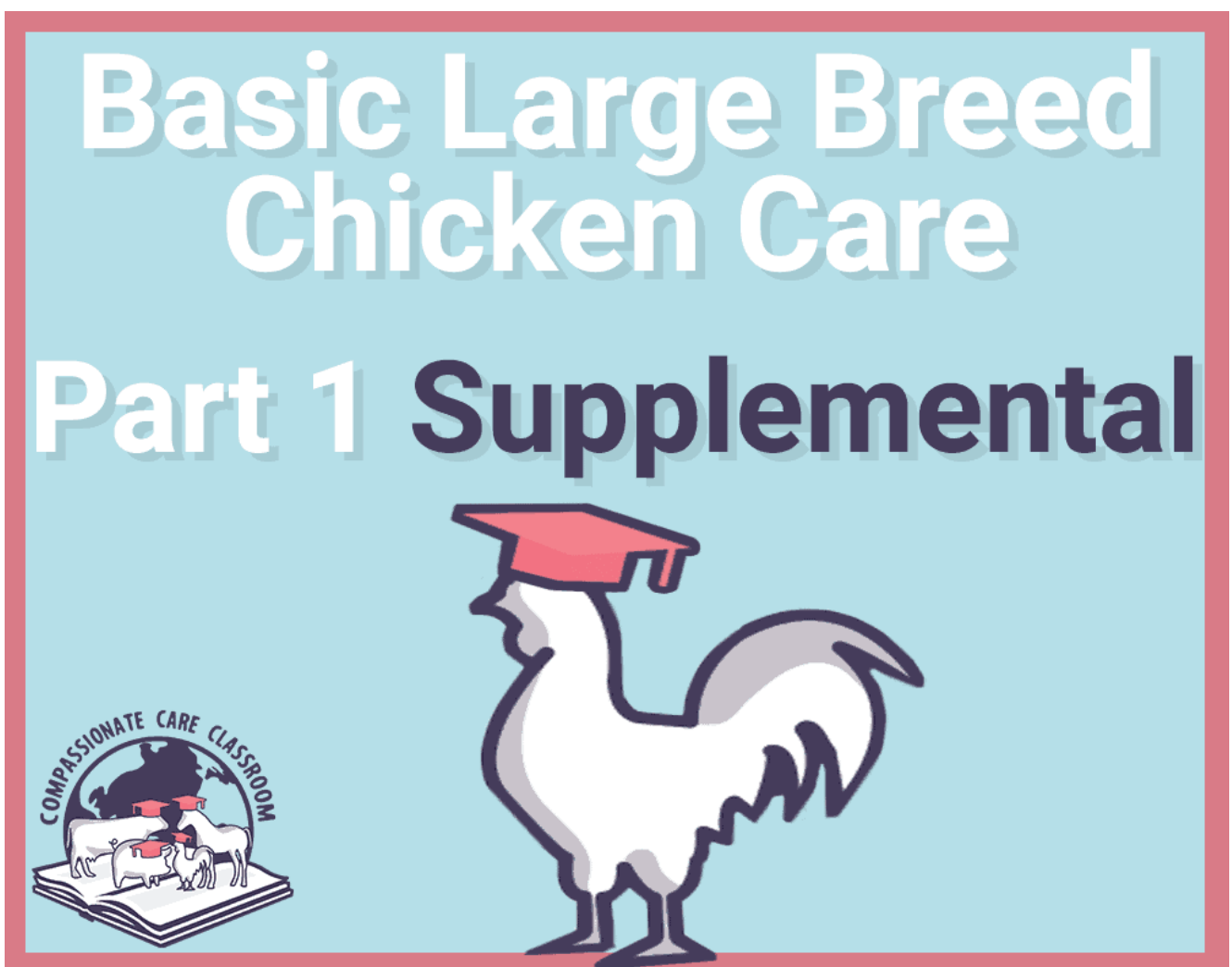
[Basic Large Breed Chicken Care Part 1](#)



[Basic Chicken Care Part 1 Supplemental](#)

[Back To Course List](#)

Basic Large Breed Chicken Care Part 1 of 2 (Supplemental Version)



For learners who have completed [Basic Chicken Care Part 1 of 2](#), this course covers the additional basic care considerations for large breed chickens, such as the Cornish cross.

[Click here](#) if you **haven't** taken Basic Chicken Care Part 1 of 2 and just want to take the main Basic Large Breed Chicken Care Part 1 of 2 course!

Prerequisites For This Course

In order to take this supplemental version of the course, you must have completed the following:



[Basic Chicken Care Part 1 of 2](#)

[Back To Course List](#)

Basic Chicken Care Part 1 of 2



This course covers the basic care considerations for non-large breed chickens and is broken down into two parts. Large breed chickens, such as Cornish crosses, have many different care requirements, which are discussed in a [separate course](#).

Learners who finish both parts of this course will be issued a

certificate of completion!

Suggested Curriculum To Learn About Chickens

We know there's a lot of information available at The Open Sanctuary Project to learn about chicken residents! To help explain all of our offerings and how to best learn about chickens, [check out our chicken curriculum resource!](#)

Chicken Course Progression Options

If you are interested in learning about both large breed and non-large breed chickens, the chart below shows the various options for course progression.

Compassionate Care Classroom Chicken Course Progression Options

In order to reduce redundant information for those who take courses for both large breed and non-large breed chickens, we've divided our Basic Chicken Care courses into primary and supplemental categories!

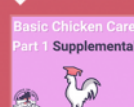
1a) Start with one of the two Basic Chicken Care Part 1 courses- whichever you'd like!



or



1b) (Optional) Use a supplemental course to get up to speed on the other Basic Chicken Care Part 1 course quickly!
Or, Skip the supplemental for now.



2a) Take Part 2 to receive one of two certificates of completion!



Certificate of Completion:
Basic Chicken Care



Certificate of Completion:
Basic Large Breed Chicken Care

2b) (Optional) Take the remaining supplemental Part 2 course to receive the remaining Certificate of Completion!



Congratulations!
You've completed all Basic Chicken Care coursework!

Certificate of Completion:
Basic Large Breed Chicken Care

Certificate of Completion:
Basic Chicken Care

Prerequisites: None

[Back To Course List](#)